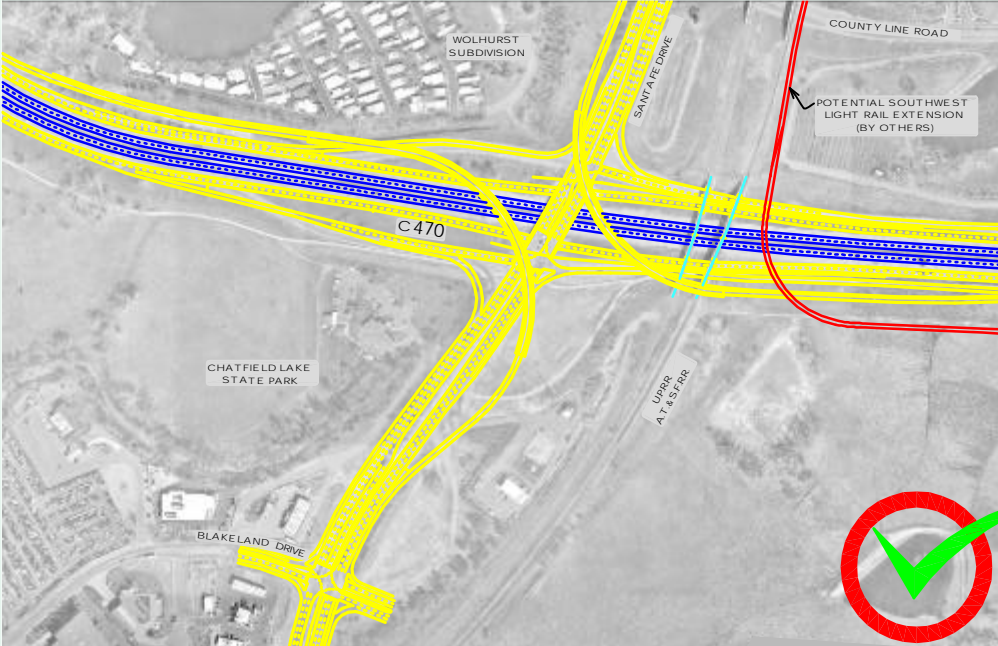


SANTA FE INTERCHANGE

ALTERNATIVES DISPOSITION

DIAMOND W / TWO FLY - OVERS



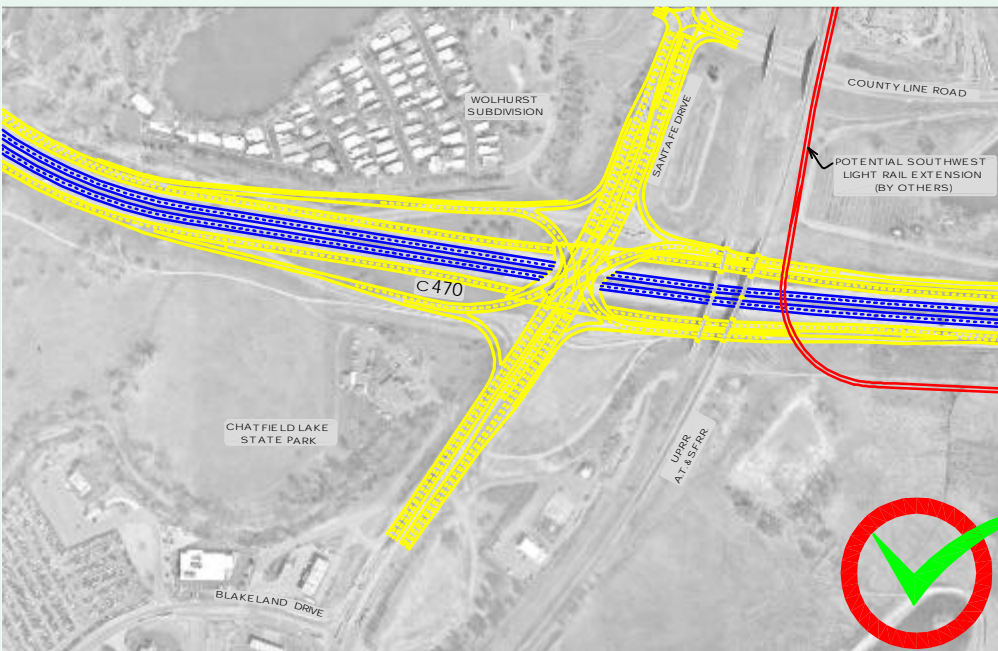
DESCRIPTION

- The Two Highest Volume Traffic Movements Are Addressed With Fly - Over Ramps
- Potential Impacts To Wolhurst Subdivision
- No Impact To State Park Land

DISPOSITION

This Alternative Has Been Carried Forward In Conjunction With The Improved Diamond Alternative To Create A Hybrid Version Of The Two.

SINGLE POINT URBAN



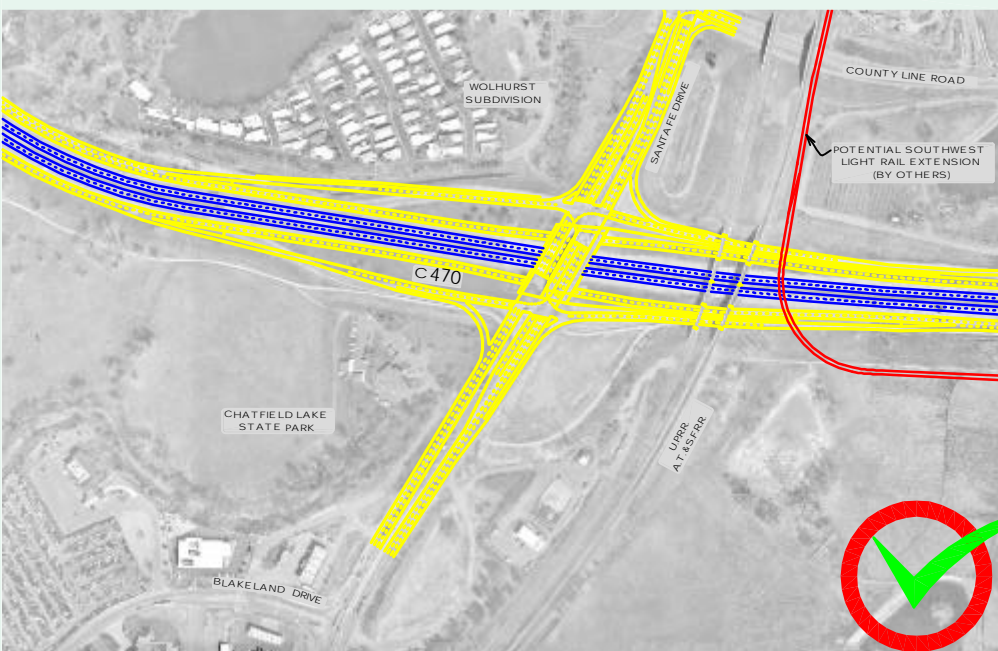
DESCRIPTION

- All Thru & Left - Turning Traffic Movements Are Controlled With One Traffic Signal
- Small Footprint

DISPOSITION

This Alternative Will Be Carried Forward With 2 Fly-Overs, Southbound Santa Fe To Eastbound C-470 and Northbound Santa Fe to Westbound C-470. The Fly-Overs Provide Potential For Future Capacity Implementation.

IMPROVED DIAMOND



DESCRIPTION

- Expansion Of The Existing Diamond Interchange
- Small Footprint

DISPOSITION

This Alternative Will Be Carried Forward With 2 Fly-Overs, Southbound Santa Fe To Eastbound C-470 and Northbound Santa Fe to Westbound C-470. The Fly-Overs Provide Potential For Future Capacity Implementation.



ALTERNATIVE ELIMINATED



ALTERNATIVE CARRIED FORWARD



ALTERNATIVE CARRIED FORWARD IN COMBINATION WITH ANOTHER



EXPRESS LANES



GENERAL PURPOSE LANES



1" = 200'